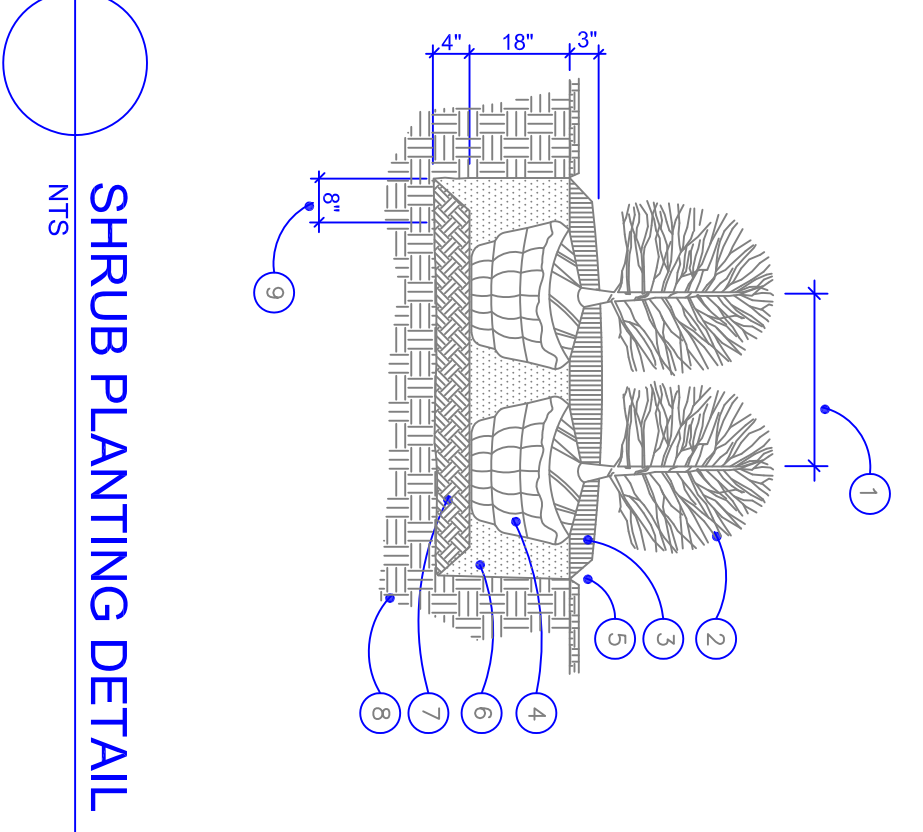
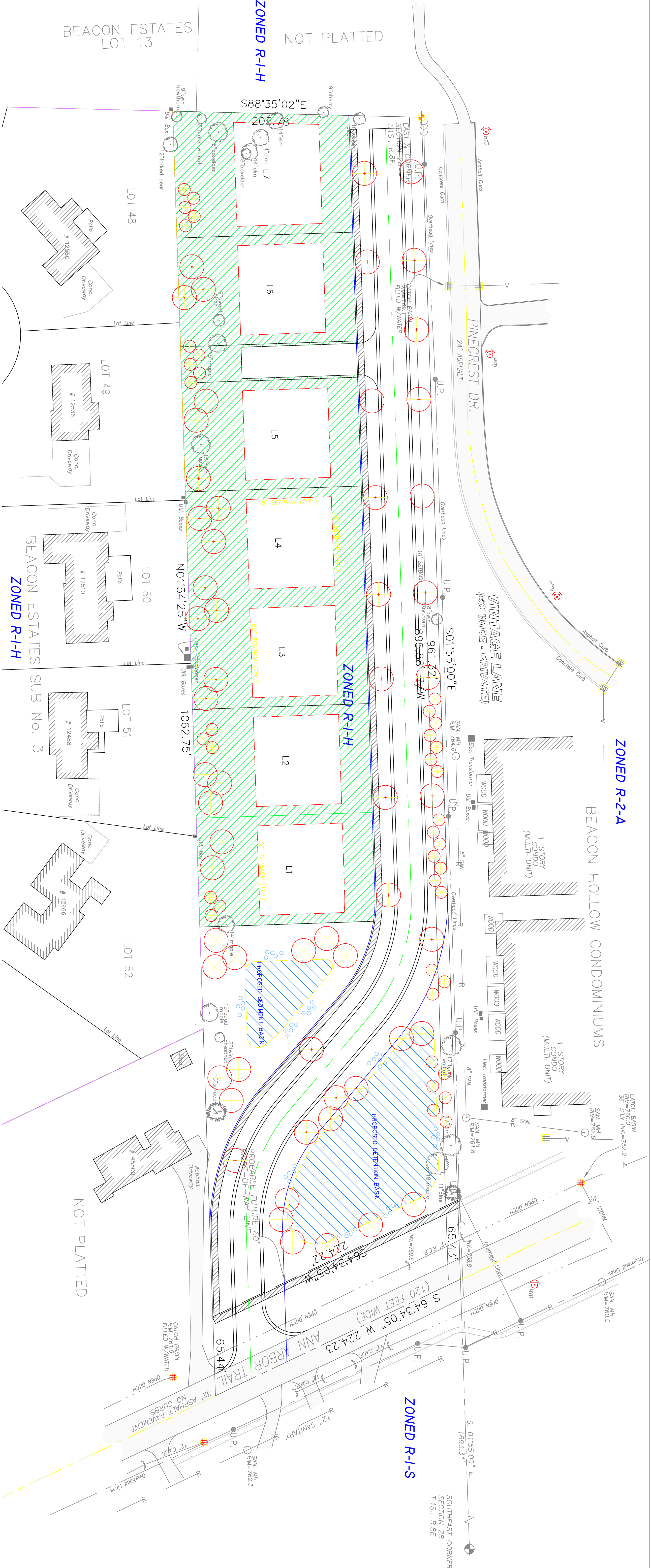
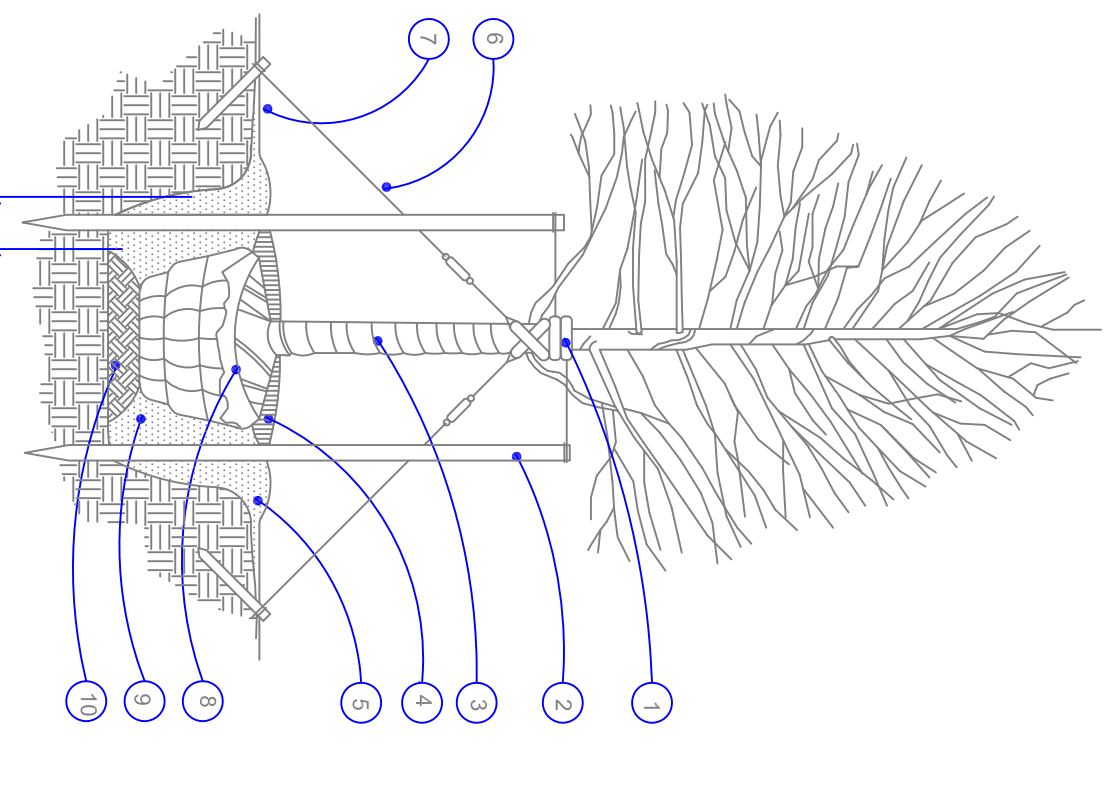


ISSUE NO.	DATE ISSUED:	DESCRIPTION:
1	7/25/2016	SITE PLAN

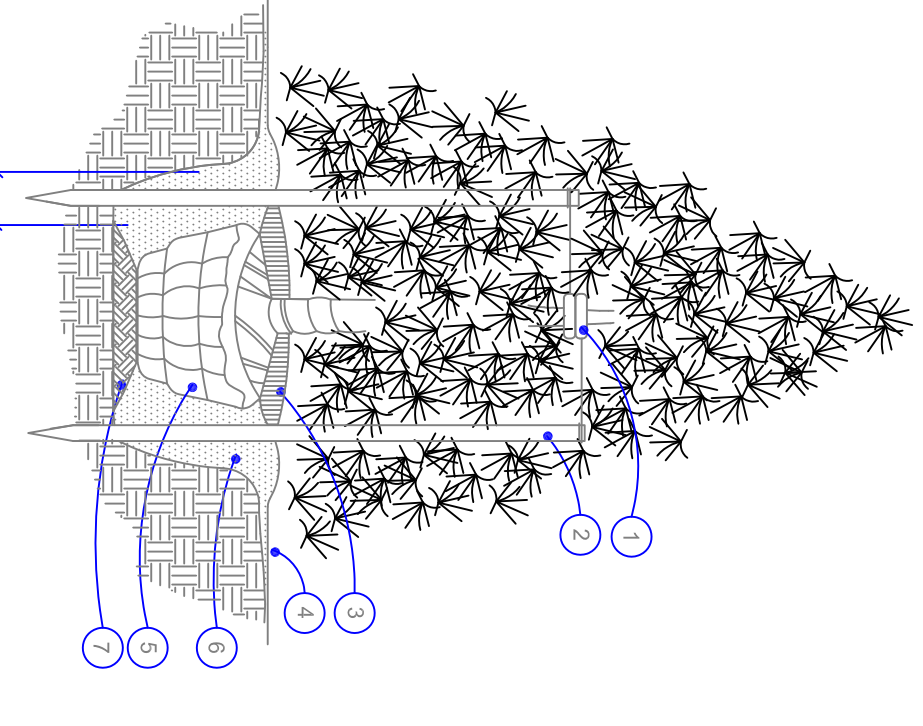
DO NOT SCALE DRAWINGS. USE ONLY DRAWINGS MARKED "ISSUED FOR CONSTRUCTION".  
VERIFY CONFIGURATIONS AND DIMENSIONS ON SITE BEFORE BEGINNING WORK. NOTIFY  
THE ENGINEER IMMEDIATELY OF ANY ERRORS, OMISSIONS OR DISCREPANCIES.



- CONTRACTOR TO VERIFY PERCOLATION OF PLANTING PIT PRIOR TO INSTALLATION
1. SEE PLAN FOR SPACING
  2. SHRUB PLANTS
  3. SPREAD BARK MULCH 3" DEPTH TYPICAL
  4. REMOVE BURLAP & CUT TWINE FROM TOP 1/3 OF BALL
  5. SHOVEL CUT EDGE OR ALUM. EDGE. SEE PLAN
  6. EXCAVATE EXISTING SOIL 18" DEEP (SEE SPECS)
  7. SCARIFY AND RECOMPACT UNDISTURBED SUBGRADE
  8. FIN. GRADE SLOPED AWAY FROM TREE
  9. EDS OF PLANT PIT



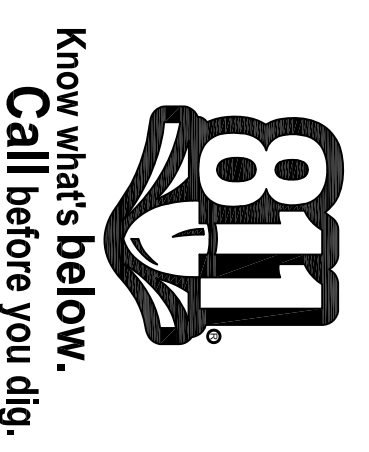
- NOTES:  
STAKE TREES UNDER 4" CALIPER GUY TREES 4" CALIPER & OVER. CONTRACTOR TO VERIFY PERCOLATION OF PLANTING PIT PRIOR TO INSTALLATION.  
FINISH GRADE SET TOP OF BALL 3" ABOVE SET STAKES VERTICAL & EVENLY SPACED STAVES OR GUY TO BE SET ABOVE 1 1/2" BRANCH  
1. 1/2" DIA. BLACK RUBBER HOSE W/ (3) FEET TREE W/ GUY, TURNBUCKLE EXTEND 18" BELOW TREE PIT IN UNDISTURBED SOIL  
2. 2" x 2" HARDWOOD STAKES TO TREE WRAP  
3. SPREAD BARK MULCH 3" DEPTH (6" DIA.)  
4. GUY AT 60° ANGLE  
5. FIN. GRADE SLOPED AWAY FROM TREE  
6. REMOVE BURLAP & CUT TWINE FROM TOP 1/3 OF BALL  
7. PLANT MIX  
8. SCARIFY SOIL TO 4" DEPTH AND RECOMPACT  
9. 12" MIN. BETWEEN ROOTBALL AND EDGE OF PLANT PIT



- NOTES:  
STAKE ALL EVERGREEN TREES UNDER 12" HIGH GUY ALL EVERGREEN TREES 12" HIGH AND OVER NEVER CUT CENTRAL LEADER PRUNE ONLY TO REMOVE DEAD OR BROKEN BRANCHES  
SET STAKES VERTICAL AND EVENLY SPACED  
1. 1/2" DIA. BLACK RUBBER HOSE W/ (3) FEET TREE W/ GUY, TURNBUCKLE EXTEND 18" BELOW TREE PIT IN UNDISTURBED SOIL  
2. 2" x 2" HARDWOOD STAKES TO TREE WRAP  
3. SPREAD BARK MULCH 3" DEPTH (6" DIA.)  
4. GUY AT 60° ANGLE  
5. FIN. GRADE SLOPED AWAY FROM TREE  
6. REMOVE BURLAP AND LEAVE TIED  
7. PLANT MIX  
8. SCARIFY TO 4" DEPTH & RECOMPACT  
9. 12" MIN. BETWEEN ROOTBALL AND EDGE OF PLANT PIT

**General Notes**

Conform to size and description set forth in the current edition of American Standard for Nursery Stock sponsored by the American Association of Nurserymen, Inc. and approved by the American National Standards Institute, Inc.  
Be true to name in conformance to "Standardized Plant Names" Second Edition, American Joint Committee on Horticulture Nomenclature, 1942.  
Be typical of their species or variety, have normal habit of growth, well-branched and densely foliated when in leaf.  
Be of sound health and vigorous appearance, free from disease, insect pests, girdling, and other defects.  
Be of good size, well developed root systems, well developed soil systems.  
Be freshly dug and nursery grown.  
Be chosen according to soil, climatic conditions and environmental factors for the purpose of development.  
Trees shall have straight trunks with leaders intact, undamaged and uncut.



copyright © 2015 VITINS ENGINEERING  
This drawing and the subject matter contained herein are the property of VITINS ENGINEERING.  
written permission of Vitins Engineering.